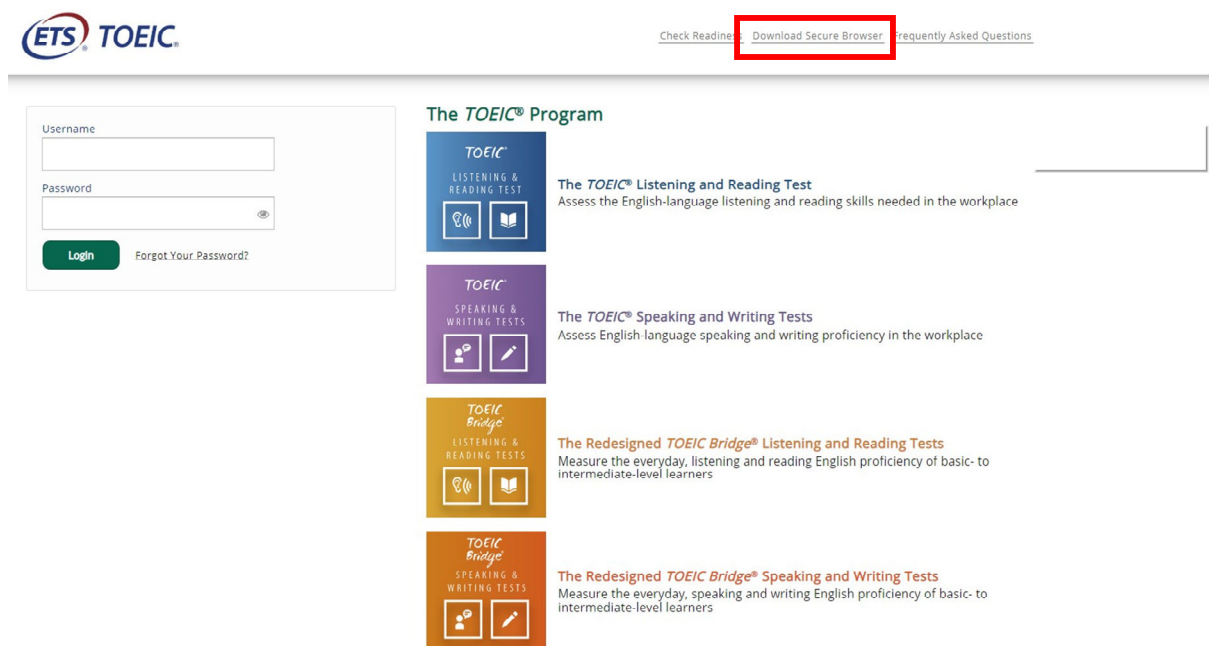


Fazer o download do TOEIC Secure Browser

(Este browser será utilizado para fazer o teste)

1. Acesse o <http://www.epntoeiconline.org/> e clique em **Download Secure Browser**.

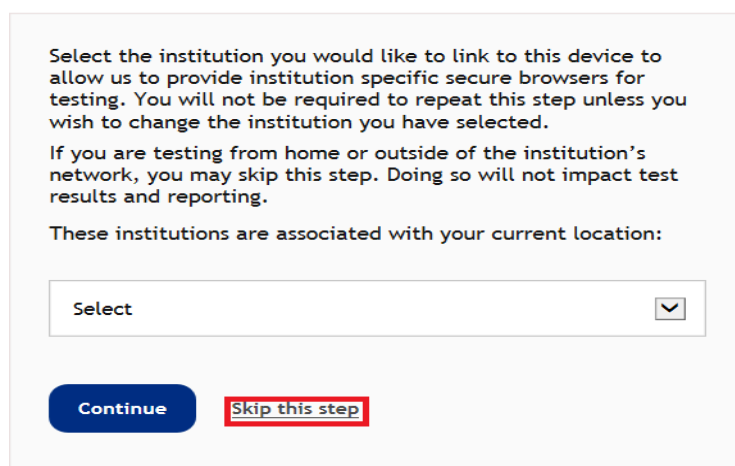


The screenshot shows the TOEIC Program website. At the top left is the ETS TOEIC logo. At the top right are navigation links: "Check Reading", "Download Secure Browser" (highlighted with a red box), and "Frequently Asked Questions". Below the navigation is a login form with fields for "Username" and "Password", a "Login" button, and a "Forgot Your Password?" link. To the right of the login form is the "The TOEIC® Program" section, which lists four test options with corresponding icons and descriptions:

- TOEIC LISTENING & READING TEST**: Assess the English-language listening and reading skills needed in the workplace.
- TOEIC SPEAKING & WRITING TESTS**: Assess English language speaking and writing proficiency in the workplace.
- TOEIC Bridge LISTENING & READING TESTS**: Measure the everyday, listening and reading English proficiency of basic- to intermediate-level learners.
- TOEIC Bridge SPEAKING & WRITING TESTS**: Measure the everyday, speaking and writing English proficiency of basic- to intermediate-level learners.

2. Clique em **Skip this Step**.

Link This Device to Your Institution



Select the institution you would like to link to this device to allow us to provide institution specific secure browsers for testing. You will not be required to repeat this step unless you wish to change the institution you have selected.

If you are testing from home or outside of the institution's network, you may skip this step. Doing so will not impact test results and reporting.

These institutions are associated with your current location:

Select

Continue **Skip this step**

3. Clique em **Download**. Uma barra aparecerá na parte inferior da página, clique em **Run**.

ClickOnce Secure Browser for Windows

The ClickOnce Secure Browser is a locked-down version of an internet browser that prohibits access to other applications during testing. This Secure Browser must be installed on all devices that will be used for testing. Install the Secure Browser by downloading the provided install file. Administrator rights are not required for installation.

Download and Install on Windows

1. Select the **Download** button located underneath these instructions.
2. Depending on your browser settings, the install file will download in one of the following ways:
 - The install file will automatically download to the default location, typically your desktop or **Downloads** folder.
 - You will be prompted to run or save the install file. Select either option. If you select **Save**, the install file will download to the default location.
3. Double-click the install file to begin the Secure Browser installation.
4. You will receive the following Security Warning: "Do you want to install this application?" Select **Install**.
5. The Secure Browser is installed, and a shortcut is added to your desktop. A dialog box informs you that installation is complete. Select **OK**.
6. Double-click the **Secure Browser** shortcut icon on your desktop to open the Secure Browser. After installing the Secure Browser, the install file is no longer needed. Use the desktop shortcut to open the Secure Browser.

Download

Copyright © 2019-2020 by
Internet Testing Systems, L

What do you want to do with TOEIC Secure Browser.exe (197 KB)?
From: programworkshop.com

Run

Save

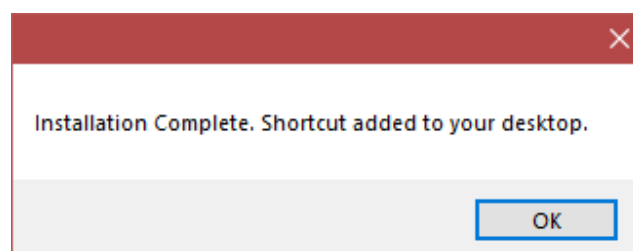
^

Cancel

×



4. Quando a instalação terminar, clique em **OK**. Um atalho para iniciar o navegador de áudio será adicionado à sua área de trabalho.



5. Confirme se o ícone abaixo está na sua área de trabalho. Clique duas vezes no ícone para garantir que o navegador abra no seu computador.



Você pode fechar a tela clicando em **Close** no canto superior direito.

OBS: No dia do teste, você deve desabilitar qualquer programa que se execute em segundo plano, como antivírus ou notificações. Qualquer atividade no computador fechará o teste e você deverá reiniciar todo o processo. Mais informações em como desativar programas em segundo plano:

<https://support.microsoft.com/pt-br/help/4468230/windows-10-background-apps-and-privacy-microsoft-privac>